

UNCONTROLLED RECTIFICATION (FORM)

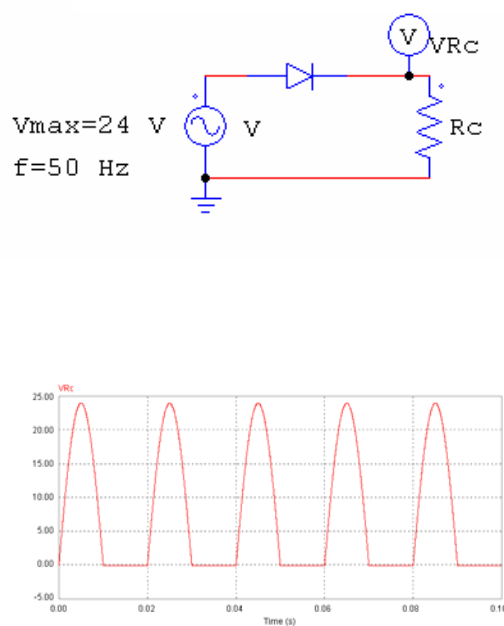
1. Single phase rectification:

We show below the values of the average output voltages of rectification circuits.

We will retain the hypothesis of operation in the **linear domain**.

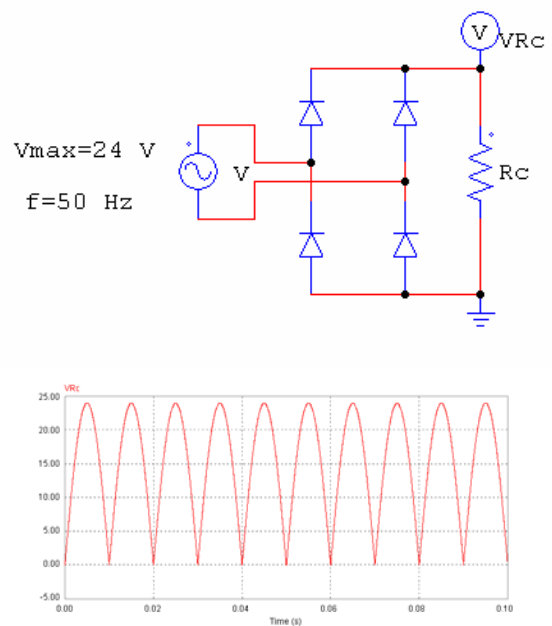
The input voltage is sinusoidal: $v(t) = V_{\max} \sin \omega t$.

Single Half-Wave Rectification



$$V_{R_{\text{cmoy}}} = \frac{V_{\max}}{\pi}$$

Double Half-Wave Rectification



$$V_{R_{\text{cmoy}}} = \frac{2V_{\max}}{\pi}$$

2. Three phase rectification:

We retain the same hypotheses as in the previous example.

